



GREEN SCHOOLS

evolveEA is a multidisciplinary sustainable design consulting firm situated at the intersection of sustainability and the built environment. Our nimble practice helps clients create, evaluate and implement greening goals appropriate for their organizations and projects.

INTERESTED IN GREENING YOUR SCHOOL?

some benefits of green schools

services we can offer

Return on Investment
Schools are social institutions. Investing in their long term value will yield financial benefits for decades beyond recapture of the initial investment

Healthy Interiors
Children's rapid growth cycles make them especially vulnerable to indoor pollutants. Studies show repeated exposure to VOC's and other chemicals can cause adversarial effects on health and behavior.

Daylight in Classrooms
Daylight and views both reassure and calm us. Well rendered lighting coming from more than one direction enables greater concentration and less eye strain. Studies show significant improvement in test scores in daylight environments.

Educational Opportunities
The inclusion of green strategies in any project serves double duty — the direct benefit and the opportunity for outreach. This is especially so in schools, where any strategy, especially the visible ones, can be an opportunity to teach concepts across content areas.

Quiet Acoustics
Noisy environments may be annoying and distracting to us, but for children the effect is magnified. Care must be given to create appropriate environments that are conducive to focus and concentration.

Financial Reimbursements
Pennsylvania has financial incentives for the achievement of LEED certification for schools. We have found that reimbursements can offset all LEED-related costs.

- Carbon Inventory
- LEED for Schools Management
- LEED for Existing Building Management
- Post Occupancy Evaluations
- Energy Benchmarking
- Engagement of Students
- Curriculum input
- Brainstorming & visioning
- Involve stakeholders
- Plan strategically
- Build the project team
- Perform cost-benefit analysis
- Develop best practices
- Implement strategies
- Green your school operations
- Seek economies of scale across your entire campus or school district



financially feasible

Albert Gallatin Area School District

Wilson Elementary School
Fairchance, Fayette County, PA

ARCH Kasun
GC Masscon
MEP Pyramid

- LEED hard and soft costs were more than offset by state financial incentives
- All stormwater is infiltrated on site
- Significant construction waste was diverted from the landfill
- Low emitting finish materials were used
- Chemical free cooling tower water treatment
- Significant open space preservation
- A transportation strategy was implemented
- Native landscaping was utilized for water efficiency
- Water fixtures save over 40% water compared to conventional fixtures
- Over 40% in energy savings are projected
- Enhanced commissioning was performed
- A computer energy management program was installed
- Reduced allergen policy and comparison study



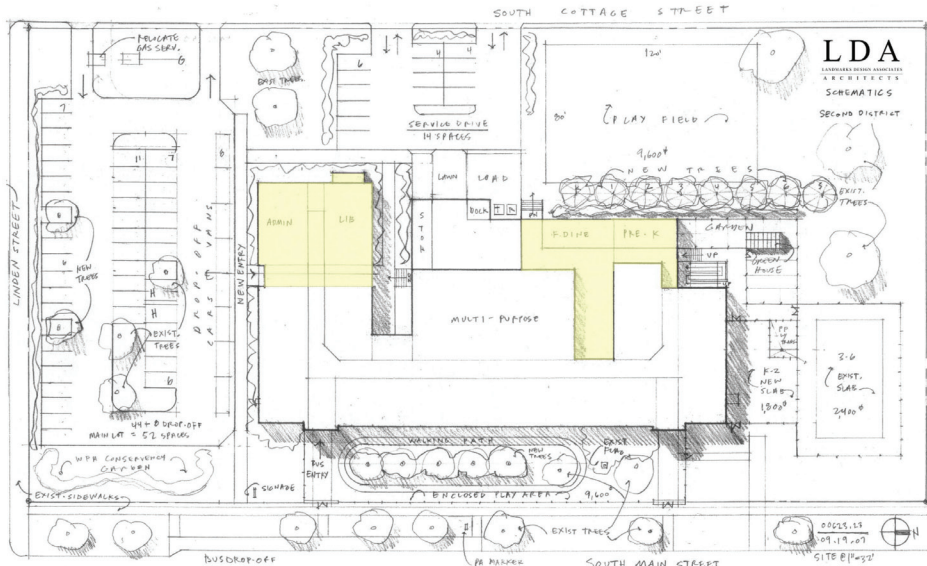
photo by evolveEA

resource conservation

Crawford Central School District

ARCH LDA
GC Eriez
MEP Iams Consulting

First District Elementary School
Second District Elementary School
Meadville, Crawford County, PA



- Indigenous landscaping with native and drought-tolerant plants
- Approx. 50% domestic water use reduction
- Enhanced commissioning
- Building reuse
- Furniture reuse
- Low emitting materials
- Reduced lighting power density

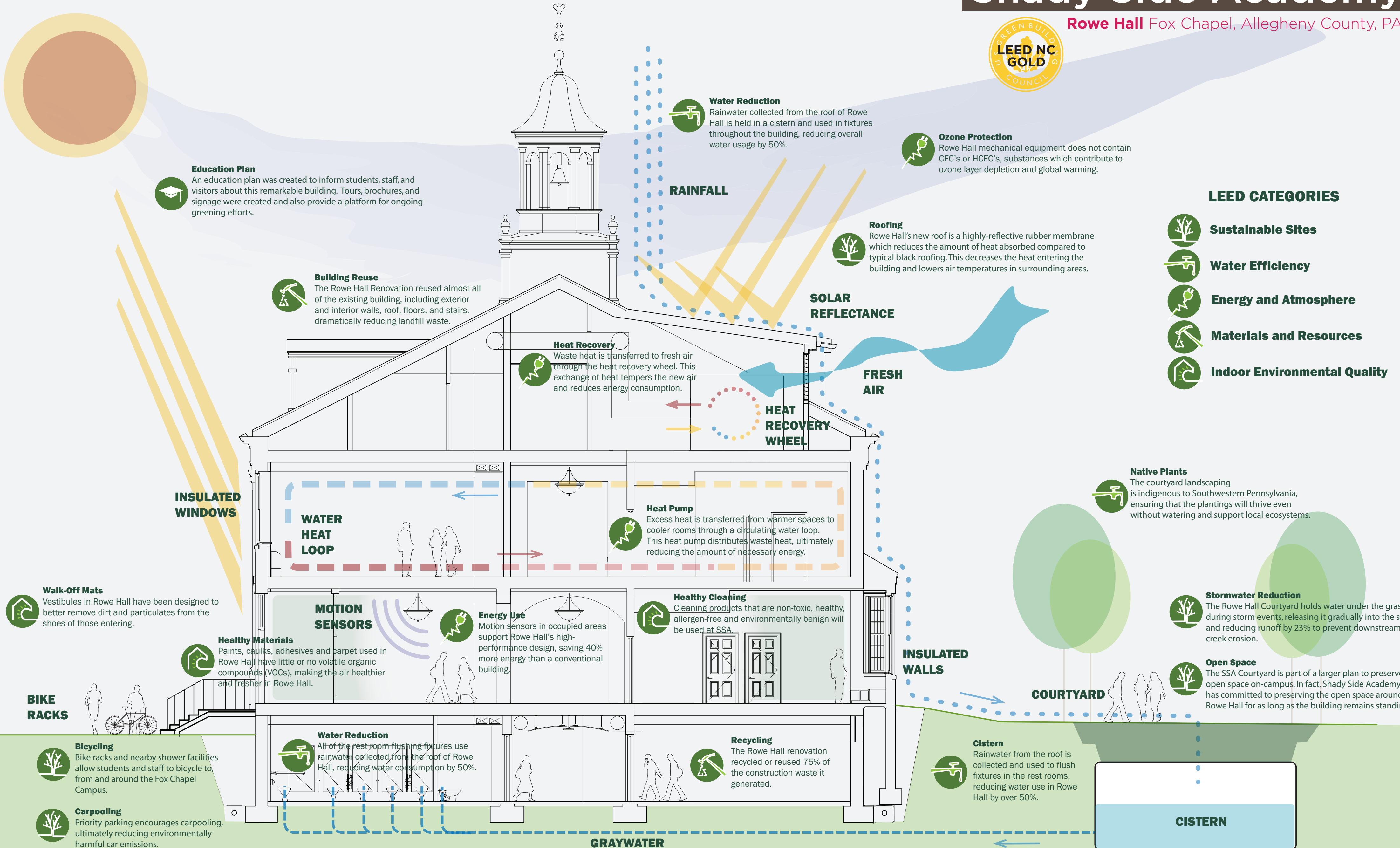
"evolveEA has helped us to explore, focus, and unify our green building ambitions. Rowe Hall has cast a template for our future buildings and campus operations to follow."
Tom Southard, Past President of Shady Side Academy

ARCH Bowie Gridley
GC Graziano
MEP Ray Engineering

comprehensive strategies

Shady Side Academy

Rowe Hall Fox Chapel, Allegheny County, PA



graphic by evolveEA